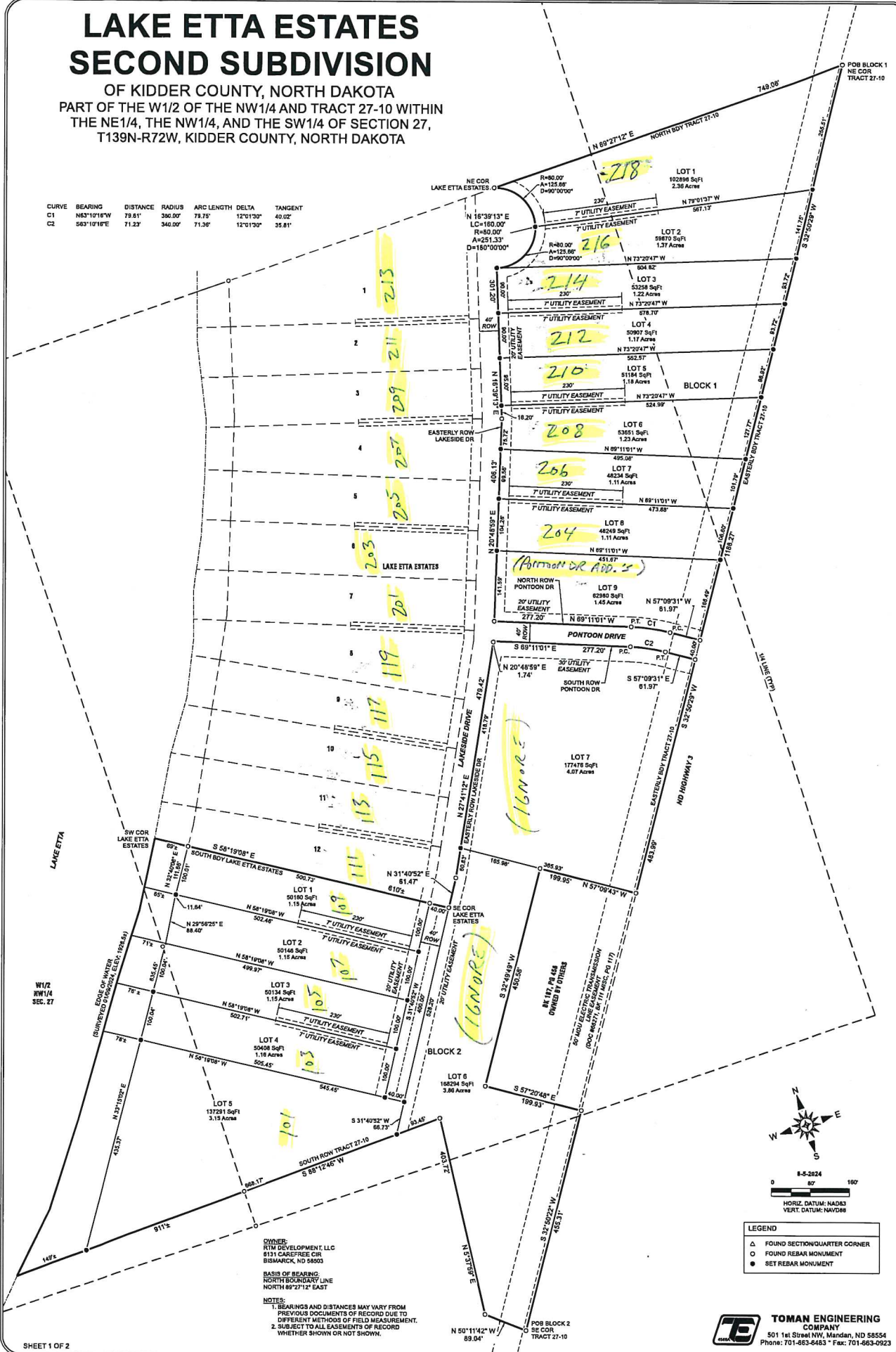


Jangula @ live.com

LAKE ETTA ESTATES SECOND SUBDIVISION

OF KIDDER COUNTY, NORTH DAKOTA
PART OF THE W1/2 OF THE NW1/4 AND TRACT 27-10 WITHIN
THE NE1/4, THE NW1/4, AND THE SW1/4 OF SECTION 27,
T139N-R72W, KIDDER COUNTY, NORTH DAKOTA

CURVE	BEARING	DISTANCE	RADIUS	ARC LENGTH	DELTA	TANGENT
C1	N63°10'16"W	79.61'	390.00'	78.75'	12°01'30"	40.02'
C2	S63°10'16"E	71.23'	340.00'	71.36'	12°01'30"	35.81'



OWNER:
RTM DEVELOPMENT, LLC
6131 CAREFREE CIR
BISMARCK, ND 58503

BASIS OF BEARING:
NORTH BOUNDARY LINE
NORTH 89°27'12" EAST

NOTES:
1. BEARINGS AND DISTANCES MAY VARY FROM PREVIOUS DOCUMENTS OF RECORD DUE TO DIFFERENT METHODS OF FIELD MEASUREMENT.
2. SUBJECT TO ALL EASEMENTS OF RECORD WHETHER SHOWN OR NOT SHOWN.

TOMAN ENGINEERING COMPANY
501 1st Street NW, Mandan, ND 58554
Phone: 701-663-6463 • Fax: 701-663-0923